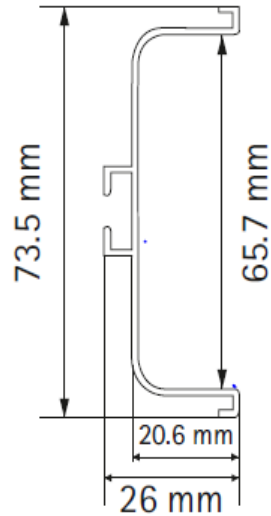


GOLA PROFILE

Product & Installation Manual



Gola Profile



Gola C-Type

Length (mm)	Finish	Article No	PU	MRP
3000	SA	9 212 797 00		1,305
	CP	9 212 559 00		1,707
	SS	9 212 560 00		1,707



Gola L-Type

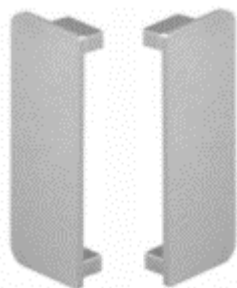
Length (mm)	Finish	Article No	PU	MRP
3000	SA	9 212 828 00		1,084
	CP	9 212 561 00		1,486
	SS	9 212 562 00		1,386

Gola Profile Accessories



L connector for connecting Gola Profile to Carcass Panel

Article No	MRP
9 220 600 00	50



End cap for Gola C-Type Profile

Compatible with	Side	Article No	MRP
SA & CP	Left	9 212 563 00	300
	Right	9 212 564 00	300
SS	Left	9 218 244 00	287
	Right	9 218 245 00	287



End cap for Gola L-Type Profile

Compatible with	Side	Article No	MRP
SA & CP	Left	9 212 565 00	300
	Right	9 212 566 00	300
SS	Left	9 218 246 00	287
	Right	9 218 247 00	287

Gola - Accessories

Outer Angle connector for L Type



Compatible with	Side	Article No	MRP
SA & CP		9 212 567 00	300
SS		9 218 248 00	287

Inner Angle connector for L Type



Compatible with	Side	Article No	MRP
SA & CP		9 212 568 00	380
SS		9 218 269 00	362

Design Idea – Gola Profile



L-Type



C-Type

Assembling of Gola Accessories

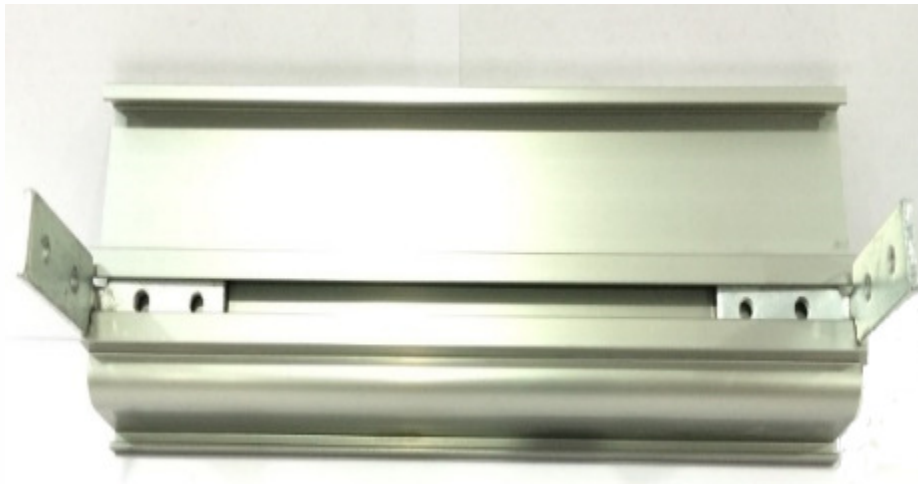


Fixing L Connector in Gola Profile for screwing on Side Panel

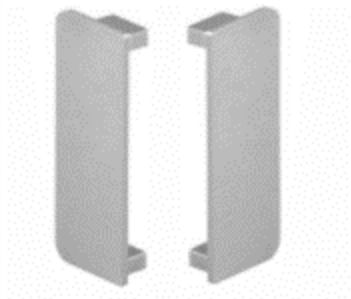


L connector for connecting Gola Profile to Carcass Panel

Article No	MRP
9 220 600 00	50

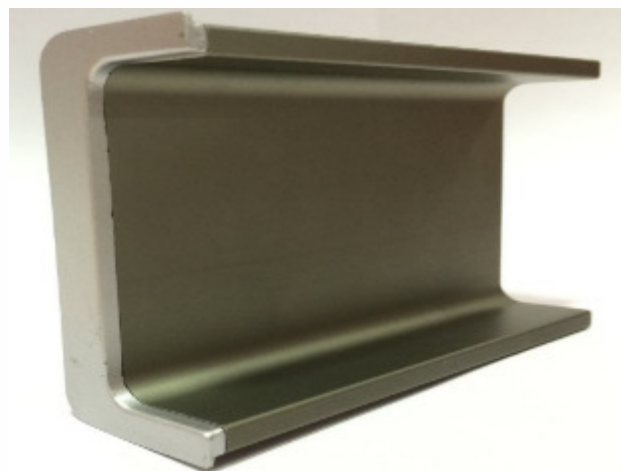


Fixing C-Type End-Cap in Gola Profile



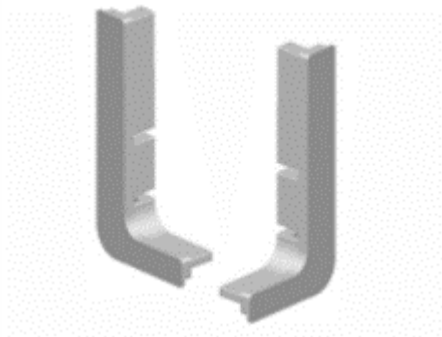
End cap for Gola C-Type Profile

Compatible with	Side	Article No	MRP
SA & CP	Left	9 212 563 00	300
	Right	9 212 564 00	300
SS	Left	9 218 244 00	287
	Right	9 218 245 00	287

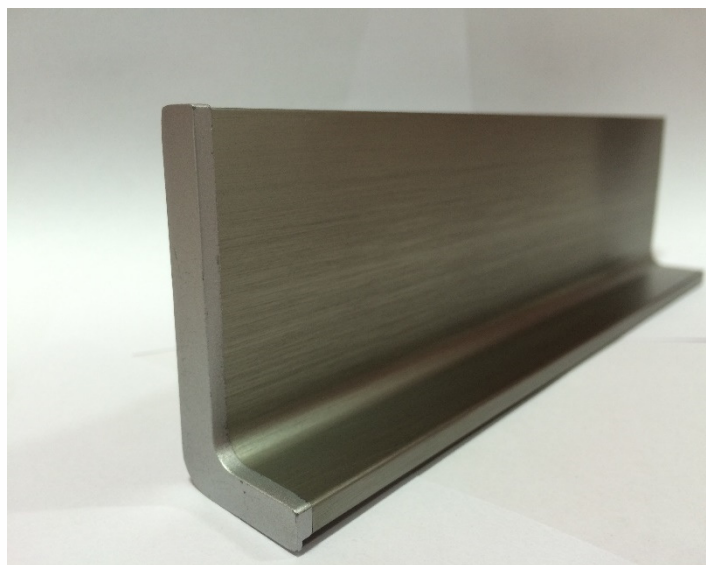
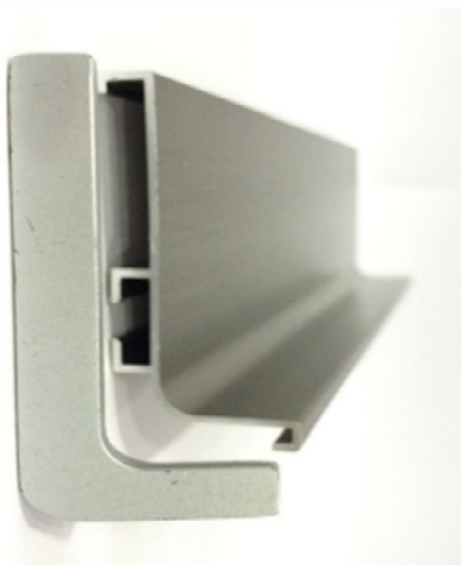


Fixing L-type End-Cap in Gola Profile

End cap for Gola L-Type Profile



Compatible with	Side	Article No	MRP
SA & CP	Left	9 212 565 00	300
	Right	9 212 566 00	300
SS	Left	9 218 246 00	287
	Right	9 218 247 00	287

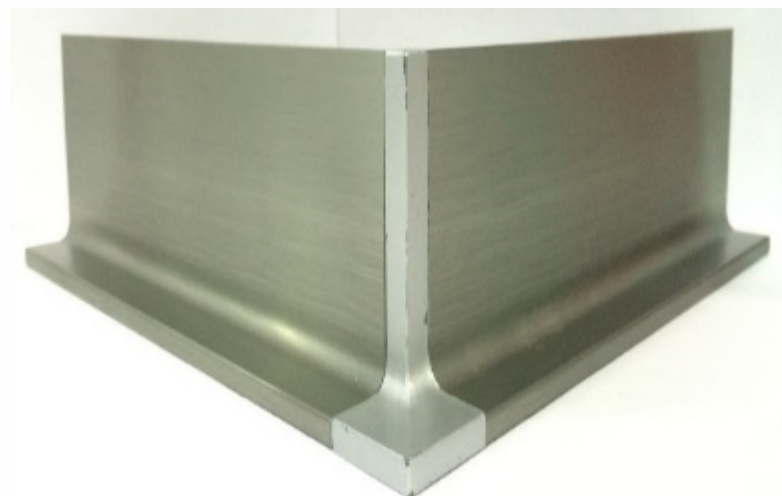
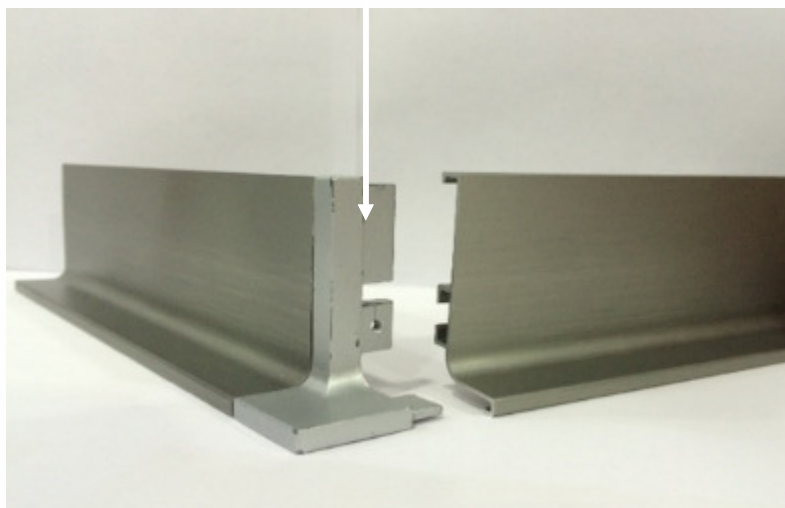


Connecting Outer Angle Connector with L-Type Gola Profile

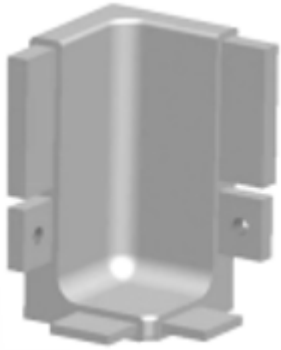


Outer Angle gola Profile connector

Compatible with	Side	Article No	MRP
SA & CP		9 212 567 00	300
SS		9 218 248 00	287

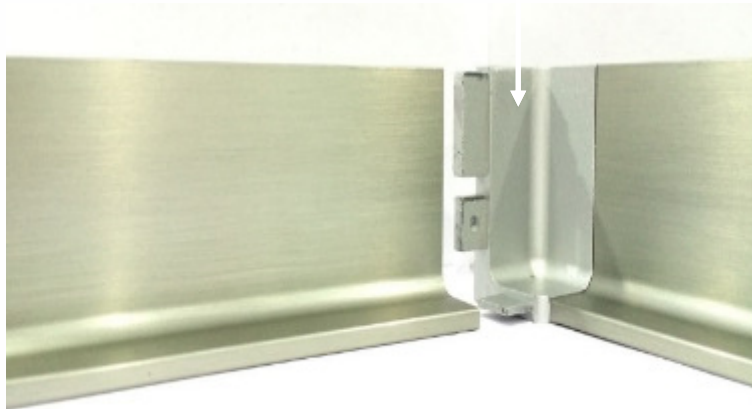


Connecting Inner Angle Connector with L-Type Gola Profile



Inner Angle gola Profile connector

Compatible with	Side	Article No	MRP
SA & CP		9 212 568 00	380
SS		9 218 269 00	362

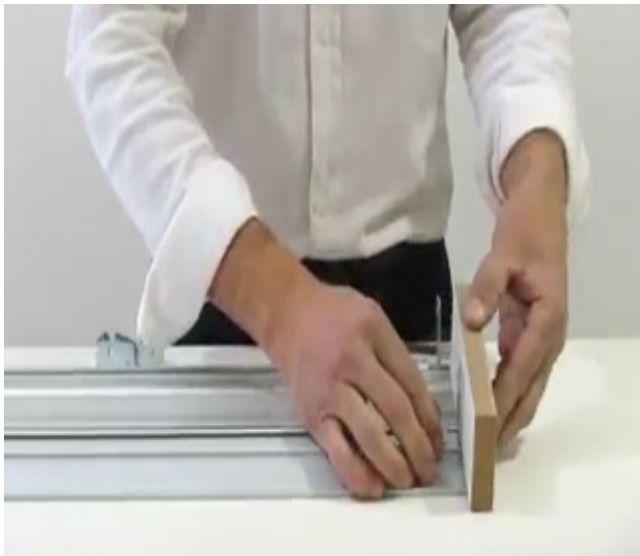


Installation Instructions- Gola Profile





Make L or C cutting on carcase.



Fix the L connector on profile back side grooving.

Marking, Drilling



Mark the hole on carcase



Drill the hole on inside of carcase for connecting L connector

Screwing



Screw -L connector on the carcass



Screw -C connector on the carcass

End Cap Fixing



Before Fixing the End Cap



After Fixing the End Cap in
L-Type Gola Profile

After Fixing the End Cap in
C-Type Gola Profile

Application of Gola Profile

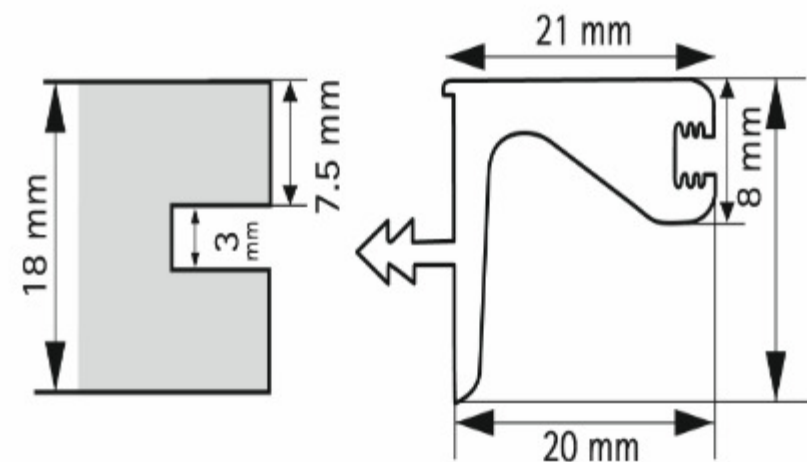




Edge Profile For Wall Cabinet



Edge Profile for Overhead Wall Cabinets

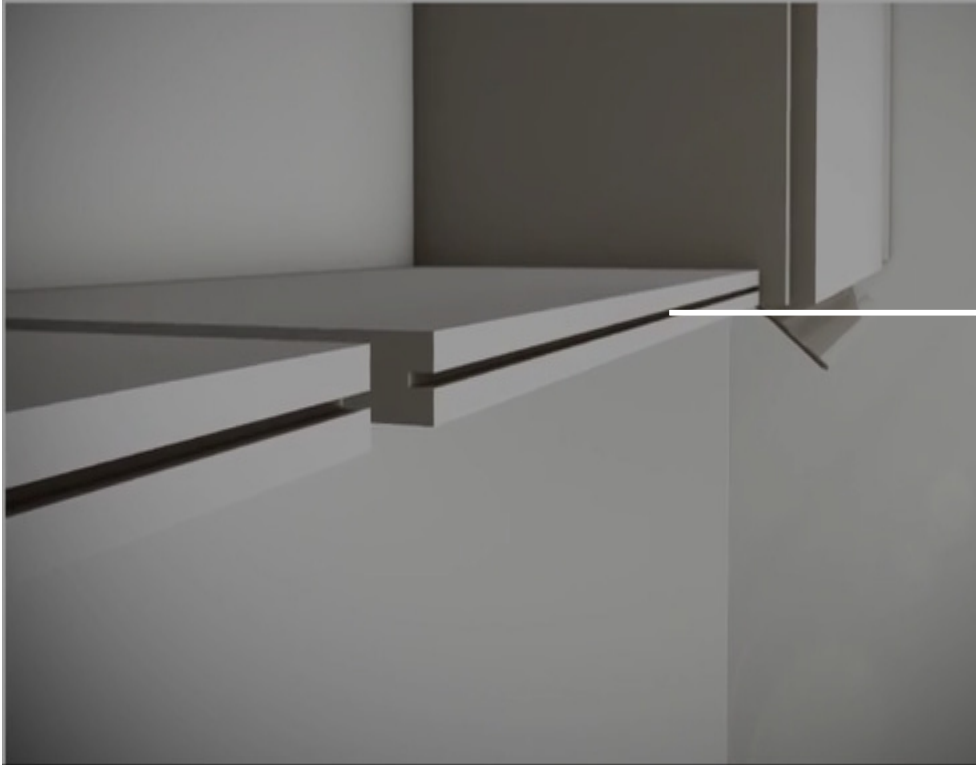


Length (mm)	Finish	Article No.	PU	MRP
3000	SA	9 212 831 00	12	1,084
	SS	9 212 832 00	12	1,346

Installation Instruction for Edge Profile for Overhead cabinets



Installation Instructions : Grooving



Make full length groove
In bottom panel of carcass

Fixation of profile in grooving



Insert tapered section of Profile
in carcass groove



Edge profile look after fixation in
wall cabinet

Thank You

